

ANNUAL  
REVIEW

---

2023



SPINNAKER  
HEALTH  
RESEARCH  
FOUNDATION



# CONTENTS

- 04 **Chairman's Report**
- 07 **Executive Director's Report**
- 08 **Pioneering Excellence**
- 09 **Our Track Record**
- 10 **Research Focus – Australian National Phenome Centre**
- 12 **2023 Research Grants**
- 13 **Research Focus – Dr Rodrigo Carlessi**
- 14 **Launch of MHT Foundation**
- 16 **Donor Focus**
- 18 **Research Focus – Dr Dayse Tavora Viera**
- 20 **Spinnaker in the Community**
- 22 **2022-2023 Donors**

## **Audited Financial Statements**

Interested persons may receive a copy of the audited financial statement of the Spinnaker Health Research Foundation for the financial year ending 30 June 2023 by written request to [admin@spinnakerhealth.org.au](mailto:admin@spinnakerhealth.org.au)



**Spinnaker Health Research Foundation**  
PO Box 480  
FREMANTLE 6959

08 6152 6278  
[admin@spinnakerhealth.org.au](mailto:admin@spinnakerhealth.org.au)  
[www.spinnakerhealth.org.au](http://www.spinnakerhealth.org.au)  
ABN 91 912 794 277



# CHAIRMAN'S REPORT



**MARK BALFOUR**  
**CHAIRMAN**

The Chair of a philanthropic foundation such as Spinnaker carries a deep and abiding responsibility, not just to the organisation, but the community as a whole. It is a responsibility I carry with pride and one that I reflect on with great consideration.

Having been Chair for eight years previously, I returned to the role early in 2023 to see the Foundation through a period of profound transformation as it entered a formal partnership with The Hospital Research Foundation Group (THRFG) in South Australia, thereby becoming the important West Australian arm of an impressive collaborative network of like-minded health research organisations.

**The partnership both heralds a new chapter for Spinnaker and lays the groundwork for an expanded scope, mission and vision while creating operational efficiencies to facilitate that growth.** It is a partnership borne of shared values and a similar history, and I know I speak on behalf of my

fellow Directors when I say I am proud of the capacity of Spinnaker to demonstrate the pioneering innovation to which we aspire in our medical research investments, to a more sustainable growth of our own future.

The decision to partner with THRFG was one that was considered at great length by the Board and Executive; with the benefit of independent, external expertise; and arrived at following a significant period of discussion between the two proposed partners. It was clear to both THRFG and Spinnaker that the possibilities which the partnership presented, not just in our own respective States, but for medical research in Australia with a global impact, were potentially significant and the careful negotiation of the structure of, and prospects for, the partnership was made much more amiable and mutually respectful because of our shared and well aligned values.

The legacy of Spinnaker to this partnership cannot be overstated, and my fellow directors and I have been focused on the negotiations for the structure and aspirations of the new partnership, to preserve the legacy that Spinnaker has created. **For 27 years we have sought out and carefully invested in some of Australia's most novel, pioneering research** that has solved significant health problems and led to deeper understanding of diseases such as diabetes, cancer, inflammatory disease, mental health, and metabolic disorders, to name just a few. We sincerely believe that the impact

of the research in which we have invested has had a demonstrative and meaningful effect on the way we practice medicine, on our communities and for individuals.

**This has meant many more people have the gift of a healthier future because of our funding of innovative research, our committed clinical researchers and the generous community of donors who trust us to invest their money in the health of our local and broader community.**

We commit to continuing in this endeavour, and we believe this partnership will magnify our impact, streamline our operational efficiencies, and create a platform for growth that will provide greater opportunities to fund cutting edge research, particularly in under-served areas of medicine and health initiatives.

I extend sincere thanks to my fellow Directors who have been bold, courageous, careful, and diligent in their consideration of a new business model that demonstrates our sector-leading model of modernisation in an ever-challenging world of health research. I also extend my thanks to the Executive team who continue to innovate across all areas of the business and deliver against our strategic intent, consistently punching above the weight of a small team. **In closing, I extend the warmest welcome to our colleagues at THRFG with whom we are excited to be working alongside for even greater outcomes in health and wellbeing for our global community.**

**“I AM SO FORTUNATE TO HAVE BEEN GIVEN THIS OPPORTUNITY. I ENDEAVOUR TO IMPROVE THE PHYSIOTHERAPY SERVICE WHICH IS BEING PROVIDED TO MY PATIENTS IN THE ADVANCED LUNG DISEASE UNIT AT FIONA STANLEY HOSPITAL VIA A CONTINUOUS COMMITMENT TO ONGOING RESEARCH AND COLLABORATION WITH LIKE-MINDED PROFESSIONALS BOTH NATIONALLY AND INTERNATIONALLY.”**

*Kathryn Watson,  
Senior Physiotherapist,  
Fiona Stanley Hospital.  
Barry Marshall Travel  
Grant Recipient 2023.*



**“WESTERN AUSTRALIA  
IS HOME TO  
INCREDIBLY TALENTED  
AND DEDICATED  
DOCTORS, NURSES  
AND ALLIED HEALTH  
PRACTITIONERS WHO  
ARE **INSPIRED TO  
FIND INNOVATIVE  
SOLUTIONS TO  
IMPROVE THE HEALTH  
OF OUR COMMUNITY”****

**Dana Wallace-Campbell,**  
Executive Director,  
Spinnaker Health  
Research  
Foundation



*Dr Warren Pavey.*

# EXECUTIVE DIRECTOR'S REPORT



**DANA WALLACE-CAMPBELL**  
EXECUTIVE DIRECTOR

After the turmoil of the pandemic, it was wonderful to embrace normality these past 12 months. As the world opened again, we returned to a more normal routine of working and engaging with each other and welcomed opportunities to rethink and reimagine. At Spinnaker, we carefully assessed both our opportunities and our lessons learned.

This year, we took the time to think carefully about the risks that we faced during this rapidly changing time, the exposure we had to those risks, and what we could learn to better safeguard ourselves into the future. **Importantly, we examined our business model to ensure it was appropriate to meet the challenges of a rapidly changing world with increasingly complex needs.**

Through this we learned we have two assets that facilitated not just our stability, but our growth – an innovative mindset and the trust

of our donors. This combination gave us the courage to challenge our status quo, think beyond the limits of our proud legacy and reimagine Spinnaker to enable a business model that will create opportunities for greater investment in the health of our communities, refine operational efficiencies and **lead from the front to foster innovation and collaboration in medical research for Western Australia.** We are now at an important and exciting branch in our road. I am incredibly proud of the path we are taking and look forward to our journey along this new road with our partners at The Hospital Research Foundation Group.

We of course didn't spend all of our time reflecting; it has been another busy year. With great excitement we welcomed the very first Spinnaker baby to our work family when beautiful Thomas was born to our fabulous Partnerships Development Manager, Sarah Taylor. With Sarah on parental leave, it created an opportunity to expand the team and we welcomed Catia Furtado and Emma Braidahl, adding to our exceptional pool of talent.

In April we launched the Fire Up for Men's Health campaign in support of our newly established MHT Foundation. You can read more about this on page 14 and I commend the team for delivering

such a creative, engaging and successful campaign. **MHT has been a long-held ambition** and it gives me great pride to have been able to bring this important initiative to life after three years of careful planning and diligent work.

**Two generous grants from Telethon enabled us to kickstart a world-leading project to assess the prevalence of fatty liver disease in children.** This is an important cornerstone project of our Family Health initiative that seeks to better understand the risks of intergenerational metabolic disease and the actions we need to take to mitigate those risks as early as we possibly can to provide children with the best opportunity for a healthy life.

We were also very pleased to reinstate the Barry` Marshall Travel Awards, giving three of our pioneering researchers the chance to share their work with eminent colleagues throughout the world. We awarded eight competitive grants, invested in new technology for cutting edge research and funded vital top up grants for Early Career Researchers – **and all because our donors believe that the best gift we can give is the gift of a healthy future.**

To all of our supporters – thank you, from the bottom of my heart. **We couldn't do it without you.**

# PIONEERING EXCELLENCE FOR BETTER HEALTH

**Mission Statement:** Together, we can improve community health outcomes in Western Australia through investment in ground-breaking innovations and community-to-bench translational medical research

## CORPORATE GOVERNANCE

Spinnaker Health Research Foundation is an independent charitable trust, administered by a corporate trustee, which was founded in 1996 at Fremantle Hospital. The Foundation is governed by a board of Western Australian business leaders who voluntarily commit their expertise and is supported by a Scientific Advisory Committee comprised of leaders in clinical and academic research. The Foundation is managed by a small executive team based at both Fiona Stanley and Fremantle Hospitals

As Western Australia grows and our community changes and develops, there is an increasing need for innovative health solutions that serve our community. And while Western Australia has the talent and the capabilities to deliver translational life-changing real-world care, we have a gap in ensuring early, trailblazing projects receive the funding they need.

## SPINNAKER BOARD



**Andrew Friars**  
Chairman and Director  
(until June 2023)



**Mark Balfour**  
Director/Acting Chair  
(from June 2023)



**Helen Warnock**  
Director



**Brad Thomason**  
Director



**Jenny Rachmat**  
Director



**Colin La Galia**  
Director



**Diana Forsyth**  
Director



**Mark Rintoul**  
Director (until  
December 2022)

## SPINNAKER TEAM



**Dana Wallace-Campbell**  
Executive Director



**Sarah Taylor**  
Partnerships  
Development Manager



**Emma Breidahl**  
Executive Manager,  
Philanthropy



**Catia Furtado**  
Executive Manager,  
Operations



**Huey Yeo**  
Administrative  
Assistant

## PATRON



**Professor Barry Marshall AC**  
Nobel Laureate

## SCIENTIFIC ADVISORY COMMITTEE

### Professor Jim Codde, Chair

Director – Institute for Health Research,  
University of Notre Dame Australia

### Professor Sue Fletcher AO

Deputy Director of the Centre for Molecular  
Medicine and Innovative Therapies,  
Murdoch University, Professor at Perron  
Institute, Chief Scientific Officer at PYC  
Therapeutics

### Clory Carello

Chief Executive Officer, Cockburn  
Integrated Health

### Professor Merrilee Needham

Clinical Research Director SMHS, Head  
of Neurology – Fiona Stanley Hospital  
& Foundation Chair of Neurology, joint  
appointment, Murdoch University,  
University of Notre Dame Australia and  
Fiona Stanley Hospital

### Adjunct Professor Chris Judkins

Cardiologist – Fiona Stanley Hospital &  
Adjunct Professor – University of Notre  
Dame Australia

### Associate Professor Dale Edgar

Senior Physiotherapist – Fiona Stanley  
Hospital & Head, Burn Injury Research Node  
– University of Notre Dame Australia

### Dr Andrew Redfern

Clinical Academic Oncologist, UWA Medical  
School, University of Western Australia,  
Consultant Medical Oncologist, South  
Metropolitan Health Service, Medical  
Director, Linear Clinical Research, Associate  
Director, Harry Perkins Institute of Medical  
Research & Lead Clinician, Breast Tumour  
Collaborative, WA Cancer & Palliative Care  
Network

## GENERAL ADVISORY COMMITTEE

### Ron Bennetts

Finance, governance, risk management and  
organisational change

### Jane McNamara

Corporate affairs and communications

### John Murray

Tax law, governance and not-for-profits

## SPECIALIST ADVISORS

### Associate Professor Ed Litton

Head of Intensive Care Research, Fiona  
Stanley Hospital

### Professor David Fletcher

Clinical Staff Representative, Fiona Stanley  
and Fremantle Hospitals Group



# OUR TRACK RECORD

**At Spinnaker, we know that better research means better health.**

With more than a quarter of a century of success and experience, Spinnaker continues to build on our strength and expertise to leverage impact. Our focus is on finding treatments and solutions to the chronic health issues that impact our community the most.



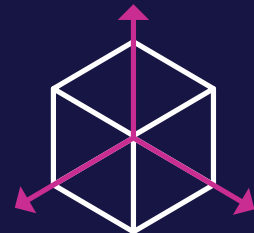
## IN THE LAST FIVE YEARS WE HAVE:



■ Supported 50 researchers on their journey of discovery with Early Career Grants, Seed Funding and Travel Awards, valued at over \$708,000



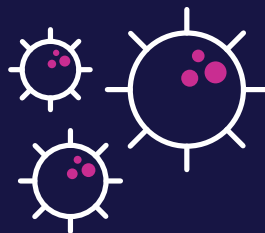
■ Funded two major standalone research projects focussed on fatty liver disease in children and Covid-19 responses, valued at \$728,000.



■ Funded three major pieces of transformational equipment – a Bod Pod, Fibroscan and 3D printer, valued at \$180,000.



■ Launched a new sub Foundation, MHT Foundation with a focus on West Australian men's health.



■ Launched the Janine Chalwell Award and raised over \$650,000 for Melanoma Research.



■ Celebrated our 25th Anniversary

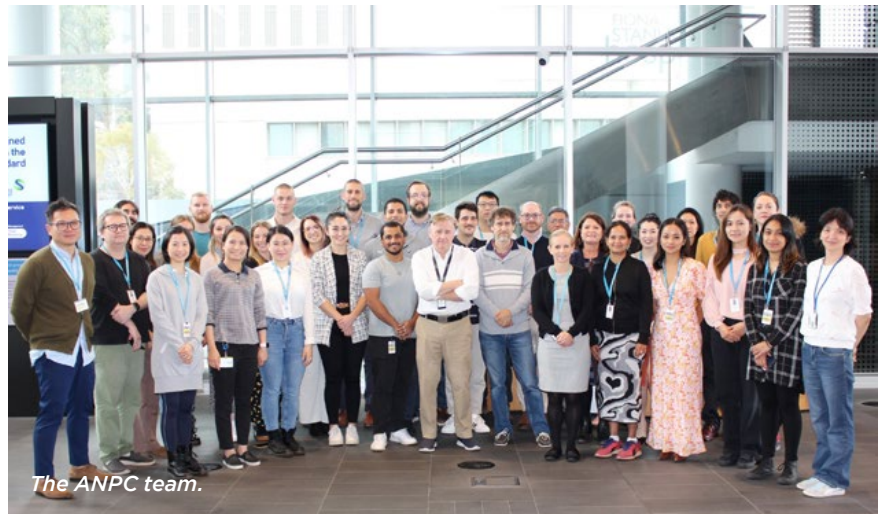
# RESEARCH FOCUS

## COVID-19 RESEARCH FOR NOW AND INTO THE FUTURE

In 2020 we were at the beginning of the Covid-19 pandemic, when there was so much fear and very few answers. Spinnaker's Executive Director Dana Wallace-Campbell knew we needed to act and with the support of generous donors and an exceptional gift directly from the Foundation, Spinnaker committed \$500,000 to world-leading research by the Australian National Phenome Centre (ANPC) at Murdoch University.

**This was to fund a world first, international collaboration with Addenbrooke's Hospital at the University of Cambridge,** examining samples collected from COVID-19 positive patients in WA and in the UK over three years, to better understand the pathway to recovery for COVID-19 positive patients; how the virus effects people in the short, medium and long term and how patients recover from the disease. Within a few short months, the project was successful in bringing in more samples from around the world into Western Australia, including those from Spain, Malaysia, Europe and the USA.

The findings of this study have been truly ground-breaking and have been vitally important to assist in the global understanding of the



*The ANPC team.*

impact of Covid-19 infection on an individual's health as well as better understanding early intervention methods, to offset the possibility of lifelong disease and impairment.

Significantly, the research was one of the first to recognise what we now know as 'Long Covid'. This understanding has allowed health systems around the world to better prepare for the likelihood of continuing and increasing burden of disease on so many patients for whom the virus impacts with heightened states of infection.

**Spinnaker is proud to have been at the forefront of funding this incredibly significant research, well ahead of the curve, that had and will continue to have impact for our local and global community.** Importantly, the

funding we gave facilitated further funding of over \$13million from national and state government, competitive grants and other philanthropic foundations. The research continues to explore new frontiers of viral infections, beyond the initial focus of Covid, and the findings have global influence in clinical settings and government frameworks.

The research has been led by world renowned phenomics pioneer and Director of ANPC, Professor Jeremy Nicholson.

"This is the most important healthcare challenge on the planet and there is no better equipped metabolic lab in Australia, or possibly anywhere, to undertake this type of work in an excellent clinical framework. Our goal is to deliver a real solution for real people in an accelerated time-frame," said Professor Nicholson, at the time of the donation in May 2020.

Now more than three years on, for many the pandemic seems a lifetime away. However, Professor Nicholson and his team know all too well this is not the case and there is a continued threat of infection as well as many long-term implications for people in Western Australia and across the world.

"When the ANPC received its first grant from Spinnaker, it enabled us



*Spinnaker Director Mark Balfour and the ANPC's Professor Elaine Holmes and Professor Jeremy Nicholson*

to catalyse our research program into the disease and allowed us to develop new ways to study and understand the disease at a deep, molecular level,” said Professor Nicholson.

“We were, and continue to be, deeply humbled to be entrusted with such a responsibility and it gave us a real purpose to contribute to the understanding of this disease.”

**“The Spinnaker funding really enabled us to accelerate our research and allowed us to leverage this donation with other sources of funding.”**

This additional funding has allowed Professor Nicholson and his team to make some world first breakthroughs and publish widely at the international stage, which has allowed other researchers and clinicians to learn from their findings.

“We have published and contributed significantly to the deep understanding of this multi-system disease. As part of this work we have discovered new biomarkers of cardiovascular disease risks and those associated



*L to R: Professor Elaine Holmes, Professor Jeremy Nicholson, Stuart Robinson and Spinnaker Executive Director, Dana Wallace-Campbell.*

with secondary organ damage,” says Professor Nicholson.

“Our work established a new systems approach for the deep phenotyping of the SARS-Cov-2 virus which not only enhance our preparedness for the next pandemic, but has resulted in new metabolic knowledge that is useful for the study of other non-communicable diseases,” said Professor Nicholson.

“It has allowed the ANPC to be a focal point of collaboration for

researchers around the world, to coordinate a concerted research response with global partners.”

To Spinnaker donors, Professor Nicholson has one message.

**“Your donations have allowed Spinnaker to provide the ANPC with an essential launchpad for critical research to establish proof of concept of our work. Spinnaker’s strength is its courage to support promising research and researchers at the earliest stage. Thank you.”**



*L to R: Professor Elaine Holmes, Professor Jeremy Nicholson and Dr Ruey Leng Loo.*

# 2023 RESEARCH GRANTS

It is because of the generosity of our donors that we were able to award eight grants to outstanding researchers, to take their ideas forward in 2023.

PROJECT TITLE	CHIEF INVESTIGATOR	DONOR
Predicting liver cancer risk to improve early detection and patient outcomes.	<b>Dr Rodrigo Carlessi</b> Researcher, Curtin University	Len and Fran Mihaljevich & David Clegg
Development of a new blood test to identify high risk multiple myeloma.	<b>Ms Sarah Clarke</b> Medical Scientist - PathWest, Fiona Stanley Hospital	Austal Company and Staff
Improving bone mineral density estimation from DXA scans of the forearm using AI techniques - facilitating early screening for osteoporosis.	<b>Dr Ashu Gupta</b> Medical Oncology Consultant	Fremantle Hospital Ladies Auxiliary
A new method of detecting whether medications used in heart failure patients can damage the heart itself.	<b>Ms Rebecca Hahn</b> Cardiothoracic Research Nurse, Fiona Stanley Hospital	Fewster Family Award
Comparing the efficacy of intravenous antibiotics to those given through the bone in Foot and Ankle Surgery	<b>Dr Dror Moar</b> Knee, Foot and Ankle Orthopaedic Surgeon, SMHS	SMHS Staff giving for Spinnaker Grant
Improving outcomes for patients with myelofibrosis receiving bone marrow transplant treatment.	<b>Dr Duncan Purtill</b> Consultant Physiologist - Haematology, Fiona Stanley Hospital	The Rotary Club of Fremantle and Attadale
Use finger-prick testing to check blood levels of methotrexate of patients with rheumatoid arthritis.	<b>Dr Chanakya Sharma</b> Consultant - Rheumatology, Fiona Stanley Hospital	The City of Cockburn
Comprehensive Understanding of the effects of inflammation during Pregnancy and early life on Infant immune Development (CUPID) study	<b>Dr Shailender Mehta</b> Consultant - Neonatal Unit, Fiona Stanley Hospital	The Perron Foundation



L-R: Dr Dror Moar, Ms Kathryn Watson, Dr Rodrigo Carlessi, Ms Rebecca Hahn, Ms Sarah Clarke and Dr Duncan Purtill.

# RESEARCH GRANT FOCUS

## **DR RODRIGO CARLESSI - PREDICTING LIVER CANCER RISK TO IMPROVE EARLY DETECTION AND PATIENT OUTCOMES**

**2023 Seed Grant funded by Len and Fran Mihaljevich & David Clegg**

Rodrigo Carlessi always wanted to be a scientist.

**“As a young kid, I always said I wanted to be a scientist. I guess it was something about discovery that sparked an interest for me.”**

When Rodrigo started his training, it was at a time when genetics was really starting to make an impact in the medical world, and he was fascinated.

“I think the principal interest came from the science first but the genetics work meant that I could translate that work to better outcomes for patients,” he said.

**Rodrigo is a Cancer Council WA Postdoctoral Research Fellow and part of the Liver Disease and Regeneration Group at the Curtin Health Innovation Research Institute (CHIRI) at the Curtin University Medical School.**

Rodrigo is also a 2023 Spinnaker Grant recipient, leading world-first research on how clinicians can better predict who is at risk of developing liver cancer and therefore provide early detection and treatment. Liver cancer is one of the deadliest types of cancer in the world, with approximately 10% of all cancer-related deaths attributed to the disease. In Australia, liver cancer diagnoses are continuing to grow with a 425% increase over the past 25 years.

“Liver cancer is usually diagnosed late and there isn’t much that can be done for the patient by the time they start treatment,” said Rodrigo

Rodrigo and his team want to do something about this and recently had a huge breakthrough in their



*Dr Rodrigo Carlessi*

work, which could provide an opportunity for prevention, before the cancer reaches an incurable stage.

**“Earlier this year, we have been able to prove the genetic signature of premalignant cells as a very good bio marker for risk,” he said.**

“Thanks to the Spinnaker grant, we have validated in tissue samples from Fiona Stanley Hospital, test biomarkers that show that liver cells with unique genes are top candidates for developing liver cancer.”

Rodrigo said it was exciting after so many years of benchtop work and basic science to have a breakthrough that will translate to better health outcomes for everyday West Australians and those at risk of

liver cancer, across the world.

He also wants to highlight the importance of Spinnaker Grants, which allow researchers to undertake work that leads to greater opportunities.

“Researcher’s like me need seed funding to get preliminary data and results as proof of concept, which then allows us to compete for larger funding opportunities with a competitive edge.”

**“Thank you to all Spinnaker donors for your investment. It is so important, and it is a way to make sure there is a more equal playing field in the research world.”**

**If you would like to discuss how you or your business may be able to fund a grant, please contact Emma Braidahl on 0421 219 259.**

# MHT FOUNDATION MEN. HEALTHIER TOGETHER.

This year we launched MHT Foundation to better respond to the urgent need to address the poor health outcomes of men in Western Australia from preventable disease and injury.

**MHT has been developed as a sub-foundation of Spinnaker, following a three year program of community consultation that included more than 30 health and community based organisations.**

We initially developed the strategy in response to the WA State Government 2019 Men's Health and Wellbeing Policy and we have subsequently set an ambitious 5-year target to meaningfully reset the course of men's health. We aim to do this by achieving measurable outcomes in the mitigation of prevalent health conditions, the uptake of

services and vast improvements in health literacy. Significantly, MHT Foundation will focus on the complex relationships between mental and physical health and address the real and perceived barriers to men accessing services and implementing positive change.

**The foundation was officially launched at a sell out event in June, hosted by our fabulous supporter, footy legend Matthew Pavlich, with special guests Adam Gilchrist and MHT Ambassadors Ryan Campbell and Harry Fisher.** It followed a three month campaign, Fire Up for Men's Health (FU4MH), which brought together more than 400 donors, across 34 events, supported by our wonderful sponsor Bank of Queensland and a number of other amazing businesses, who helped

us reach more than 1,000,000 West Australians in celebration and support of men's health.

We are incredibly proud of what we have been able to achieve together and we look forward to raising even more funds in the coming months. These funds will seed the first programs that will examine the barriers men face in achieving optimum health, the critical issues that combine to create poor health and wellbeing outcomes, and the way we can all work together to make sure that we value the men in our lives, create support for them to live their longest lives, and a better health future for our young boys.

**To learn more about how you can be a part of the men's health movement, call Catia Furtado on 0430 536 444.**



*MHT Advocate  
Matthew Pavlich  
as MC at the MHT  
Foundation launch.*



ANZ Brokers Fire Up in King's Park.



MHT Foundation Ambassador Harry Fisher, at the Go Camping and Overlanding Fire Up.

## THANK YOU TO THE OVER 400 DONORS, WHO SUPPORTED MHT FOUNDATION IN OUR FIRST YEAR!

**\$70k**  
raised

**400+**  
donors

**1**  
headline  
sponsor -  
BOQ

**34**  
local Fire  
Up events

**1000+**  
event  
attendees

**1million+**  
people  
reached in our  
community

**2**  
ambassadors

**14**  
prize  
sponsors

# DONOR FOCUS

## NO GREATER GIFT

John Clancy lived life on his own terms and in passing, has ensured his legacy is also on his own terms, leaving a bequest to Spinnaker Health Research Foundation.

“I am extremely proud of him,” says his sister Helen Fisher. “It is an incredibly generous thing to do and I think it is really wonderful.”

**“John didn’t like anyone telling him what to do and so I believe he would have really loved Spinnaker’s independence and be very happy that they can dictate on their own terms, how his bequest supports research that is important for the community.”**

“He also never liked the limelight and I am sure it appealed to him that his gift would receive credit, after he passed away.”

Helen also believes that the name Spinnaker would have tickled John, as he was a well versed and

competent sailor throughout his life.

Born in Mullengandra in NSW, the third of nine children, John started life on the family farm, before going into the Army. He returned to the farm after leaving military life, however things didn’t work out and he decided to move to Western Australia.

He remained close to his older sister Helen, whilst also creating his own adventurous life with expeditions to Antarctica; sailing to Fiji, Heard Island and in the Sydney to Hobart; working on the mines in WA; and a stint working in America.

According to his friend Paddy, he also had a voracious thirst for knowledge.

“He was well-read; he had a wealth of knowledge on history, current affairs and political issues and at one point in his life, went off to

Oxford University in England.”

“John was a bit of a lad, stood up for his rights and wasn’t shy on voicing his opinion when needed,” remembers Paddy.

“He made for good company, and he had a way about him.”

We are so incredibly grateful for the gift John left at the end of his adventurous and fulfilling life, a gift that is testimony to the curiosity he espoused and his commitment to learning.

**Bequests are in many ways the ultimate gift, a legacy left for the next generation that provides the opportunity to fund big ideas that are integral to the health of our community.**

**If you would like to learn more about a Gift in Will, please visit [spinnakerhealth.org.au/donate](http://spinnakerhealth.org.au/donate) or contact Emma Breidahl on 0421 219 259.**



## A FAMILY LEGACY CONTINUING TO CREATE IMPACT

**When we are able to bring together generous philanthropists with researchers whose ideas could change the world, we are in the privileged position of being able to watch magic happen.** Our world is a better place because of our wonderful donors, like the Fewster Family.

Jody Fewster learnt about giving back at a young age by watching her parents Eileen and Alan Bond.

“We are a Catholic family with strong ties to Fremantle. Mum and Dad were very passionate supporters of many charities and we were raised to give back,” she says.



“My mum has been a supporter of St Patrick’s Basilica for 40 years since before my uncle, Father Bill Hughes, was the parish priest.”

Jody has continued to support charity and non-for-profit work throughout her adult life, including as a Board Member of Parkerville and Children and Youth Care and as an Advocate of the Fathering Project at UWA.

**Jody and her family have a long history and close relationship with Spinnaker, as her uncle Bill Hughes, was a founding board member, alongside their family friend Warren Jones.**

As an extension of this relationship, Jody and her husband Damian established the Fewster Family Grant in 2021, to support an annual Spinnaker Early Career Research Grant.

As well as the strong family ties to the work Spinnaker has done for over 27 years, the Fewster’s have a number of other reasons for supporting early career research through Spinnaker.

“Supporting early-stage research gives us the opportunity to learn about that research from the ground up and also have an impact on a wider range of socioeconomic and demographic markets than a single-focused charity might impact,” said Jody.

**“We know that Spinnaker has a rigorous process around the awarding of their grants that means they have met the highest scientific standards, will make real impact in the community and are a new and novel idea that hasn’t yet been tested. It means we know our donation is going to something that is meaningful but also has the potential to actually get somewhere.”**

Jody was particularly inspired to donate, after a hospital tour she did a few years ago with Spinnaker, where she met Dr Ed Litton, Head



*Philanthropist Jody Fewster and MHT Foundation Advocate Adam Gilchrist at the MHT Foundation launch.*

of Intensive Care Research at Fiona Stanley Hospital.

“Speaking to Ed really showed me the importance of investing via Spinnaker to afford time for researchers to do their work. Time is one of our most precious commodities and by giving new, emerging and established researchers time to investigate things they know could be improved, the results can benefit such a wide range of people.”

**The Fewster Family Grant in 2023 was awarded to Fiona Stanley Hospital Research Nurse, Rebecca Hahn, who is currently completing a pilot study to test new markers that will indicate if medications used in heart failure patients can in fact damage the heart itself.**

**If you would like to learn more about becoming a major donor to Spinnaker, contact Emma Bredahl on 0421 219 259.**

# RESEARCH FOCUS

## DAYSE TAVORA-VIEIRA

If you have been a long-standing patron of Spinnaker, the name Dr Dayse Tavora-Vieira likely resonates with you as the embodiment of audiological advancements and innovation.

Dayse isn't just another clinician researcher. She is the Head of the Audiology Department for the state-wide services that encompasses Fiona Stanley, Fremantle, Sir Charles Gairdner and Royal Perth Hospitals, and a respected faculty member at both the University of Western Australia and Curtin University. Dayse is also a leader at the Hearing Implant Research Unit at Fiona Stanley Fremantle Hospitals where her main research activity is focused on cortical activity, binaural hearing pathway and brain plasticity after hearing implantation.

**Her ethos is clear to all who know her; accepting a good outcome in health is not good enough.**

"While it is commendable to have a functioning solution, my vision is always fixed on achieving even better outcomes. The real charm of our research is its direct, swift applicability as many of our discoveries find immediate real-world applications, even before their official publication," she said.

Right here in Western Australia, Dayse and her team are leading international research in a number of different areas. One of these projects is a multicentre international research partnership, with Dayse and her team being the only Australian collaborators. This initiative harnesses the World Health Organisation International Classification Function (ICF) to comprehend how pathology influences life functionality, especially in terms of hearing loss and how a cochlear implants can change that. This endeavour promises a universal language for



*Dr Tavora-Vieira is always looking to create even better outcomes for her patients, through research.*

monitoring post-implant hearing outcomes across the globe.

"This is something I am very proud of, to be the only Australian group as part of this important international benchmarking project," said Dayse.

**"It's an immense honour to be Australia's torchbearer in this ground-breaking international project. With a universal language and standardised metrics, we are poised to redefine post-implant care, ensuring consistency and unparalleled quality."**

Dayse is also revolutionising patient hearing care in Western Australia. She is spearheading the adoption of CAEP which assesses brain reactions to auditory stimuli post-hearing implantation.

"Traditional methods rely heavily on subjective patient feedback. CAEP however, gives us a direct window into what the brain perceives and how to improve the


cochlear implant setting."

This innovation is a huge advantage, especially for vulnerable populations like children, the elderly, or those with cognitive challenges. For them, effectively conveying their auditory experiences can be a challenge.

Under Dayse's stewardship, Western Australia has leapfrogged into the future with audiology research, innovation and patient care.

"Today, we don't guess outcomes; we assure them. Our approach is becoming the gold standard, inspiring other centers across the globe to emulate our success," she said.

**If Dr. Dayse Tavora-Vieira's passion and pioneering work resonate with you, and you're keen to be part of this audiological revolution, we invite you to get in touch with Emma Braidahl at 0421 219 259 to explore ways to support.**



**“WHILE IT IS  
COMMENDABLE TO  
HAVE A FUNCTIONING  
SOLUTION, MY VISION  
IS ALWAYS FIXED  
ON ACHIEVING EVEN  
BETTER OUTCOMES.”**

**Dr Dayse Tavora-Vieira**

# SPINNAKER IN THE COMMUNITY



Spinnaker's stand at the Telethon Family Festival.

## TELETHON FAMILY FESTIVAL

On 23rd October, 2022 the Spinnaker team was proud to be part of the Telethon Family Festival Charity Trail. The RAC Arena and surrounding streets were transformed into a fiesta of fun and entertainment for families and gave Spinnaker the chance to engage with the WA community and promote the incredible impact our partnership with Telethon is having for WA kids.

The Spinnaker team had great fun bringing our activation to life, for the kids and families we saw on the day, with our competition "If I could

solve one health problem it would be....", aligning with Australia's greatest discoveries such as penicillin, cochlear implant, cervical cancer vaccine, stomach ulcers and IVF... pretty cool stuff!

Spinnaker has been granted Telethon funding of a combined total of \$372,036.28 in 2021, 2022 and 2023, to support research projects including The Bod Pod, a FibroScan probe and a world leading examination of the prevalence and impact of fatty liver disease in children.

**Thank you to Channel 7 Telethon Trust and all the wonderful**

**Telethon donors for the incredible work you do to create impactful research outcomes for WA children and families.**

## CHRISTMAS POP UP

The Spinnaker team held a weeklong Christmas pop-up stand at Fiona Stanley Hospital from the 5th of December, 2022, where we ran a competition to ask people to let us know the answer to "My Christmas wish for 2023 would be..."

Our team's aim was to lift spirits around the hospital and to give back to the doctors and nurses

who are working tirelessly, even over the Christmas period, to keep us all well and safe.

### JANINE CHALWELL HIGH TEA EVENT

The 2022 Janine Chalwell High Tea event was a wonderful success, raising \$14,500 for Melanoma Research. The event was organised by Janine's best friend Di Robertson-Smith, who brought together a room packed to the rafters of Janine's family and friends to have a great time, celebrate Janine's memory and raise vital funds for research. Thank you to everyone who made the event possible, including generous prize sponsors and donors.

### GOLF DAY

The wonderful, hardworking volunteers at Fremantle and Attadale Rotary Clubs once again

put on a fabulous charity Golf Day. The event, as it is every year, was oversubscribed and we are so incredibly grateful to the many corporate teams and individuals who come along to raise funds for us and fellow charity, Care Cure Support. The event raised almost \$25,000, an incredible effort by all.

### AWARDS CEREMONY

At our 2022 Awards Ceremony, we were proud to give ten awards to impactful and hardworking West Australian researchers, made possible by our generous donors. Keynote speakers included Clinical Professor Adnan Khattak, a Medical Oncologist with special interest in gastrointestinal/hepatobiliary cancers, melanoma and lung cancer as well as Professor Sue Fletcher AO FAHMS, is a Senior Principal Research Fellow at the



L-R: Dr Maria Kailis, representing Awards Night major supporter MG Kailis, Professor Sue Fletcher and Professor Jim Codde.

Centre for Molecular Medicine and Innovative Therapies at Murdoch University and Chief Scientific Officer at PYC Therapeutics.

Both spoke in detail about how seed funding and smaller early career research grants helped to build the foundations of the world leading work they now lead.

### WE COULDN'T DO IT WITHOUT

# 2022-23 DONORS

To all of our donors, every cent makes a difference in our fight against disease. **THANK YOU.**

## GENERAL DONATIONS

Andrew Redfern  
Astrid Trevoril Brint Gwynne  
Austal  
Bonnie Cridland  
Colin Salt  
Douglas Kennedy  
Else Elizabeth de Blanken  
Farida Nagree  
Gina Chua  
Helen Warnock  
Helen Marea Ackroyd  
Ian Dubois  
Ikram Al-khazraji  
Ivan Clifford Bird  
Jack Dewar  
Jennifer Cumins  
John Dyer  
John Sweet  
Joy Stoddart  
Kok Onn Foo  
Lan Thi Freight  
Lindsay Rowe  
Mario Denden  
Mary Geraldine Bergin  
Michael Sutton  
Milica Koruga  
Miranda Stephens  
Morgan Stanley Australia Pty Ltd  
Nick Kisler  
Olivia Fiorenza  
Parag Bhatt  
Pauline Denise Santich  
Peter Camfield

Phillip Crothers  
Rosemary Lauwers  
Ruofan Gao  
Sarah Downie  
Scott Sargent  
Shudong Lyu  
Stephan Neuser-Bostel  
Suresh Prabhakaran  
Suzanne Petty  
Tom Atkinson  
Tong Lai  
Valerie Gomes  
Veronique Renel

## MAJOR DONORS

Rotary Club of Fremantle  
City of Fremantle  
Barry and Adrienne Marshall  
Business Events Perth  
John Clancy (The Estate of)  
City of Cockburn  
David John Clegg  
Jody and Damian Fewster  
Fremantle Hospital Ladies  
Auxiliary  
Katherine Wales  
Ron Bennetts  
Len and Fran Mihaljevich  
MG Kailis Group  
Channel 7 Telethon Trust  
The Stan Perron Charitable  
Foundation  
Prof Sue Fletcher  
Ricciardi Seafoods &  
Coldstore

## THE JANINE CHALWELL GRANT - MELANOMA RESEARCH

Amanda-Lee McCarthy  
Andrew Inglis  
Ashton George  
Brendan Williams  
Brent and Pattie Donovan  
Bryan Hughes  
Christopher Chalwell  
Craig Browne  
Dalton Gooding  
Darren Shillington  
Diane Robertson-Smith  
Doris Keenan  
Eastcourt Foundation  
Erin Chalwell  
Garry Ralston  
Giuseppe Angelucci  
Goldfields Toyota  
Greg Brindle  
Howard Park Wines  
Ian Wilson  
Jane Chalwell  
Janine Chalwell High Tea and  
Events  
Jenelle Heard  
Jennifer Maas  
Judy Jordan  
Lauren Miller  
Louise Warner  
Mark Steenkamp  
Matthew Banks  
Mike Jefferies  
Nader El Sayed

Nameo PTY LTD  
Neil Warburton  
Paul Ness  
Paul Quartermaine  
Peter Carter  
Peter Popov  
Peter Rourke  
Pierre Sequeira  
Renee Finlay-Notman  
Robert McKenzie  
Ross Fitzgerald  
Ross Rainbird  
Sandra Wilson  
Simon Lill  
Sue Monger  
Taylor Road IGA  
Terence Creasey  
Tony Buhagiar  
Tony McEvoy  
Trevor Nisbett  
Warrick Hazeldine

## WORKPLACE GIVING

Adrian Regli  
Alan Whelan  
Anna Rozario  
Ashok Arasu  
Ayu Gribble  
Barry Marshall  
Brian Morrow  
Bu Yeap  
Cameron Wright  
Claire McTernan  
David Bruce  
David Flechter  
Dimitri Yellachich  
Duncan Purtil  
Edmond O'Loughlin  
Fiona Wood  
Hannah Seymour  
Helen Rhodes  
Ian Lawrance  
Jafri Kuthubutheen  
John Dyer  
John Olynyk  
Lewis Marshall  
Mark Cawthorne  
Mark Johnson  
Mark Salib  
Mark Wilson  
Melanie Wright  
Mohammed Ballal  
Moira Wilson  
Nigel Barwood  
Paul Forden  
Paul Jarret  
Paul Mark  
Paul Norman  
Paula Johnson



*Professor Wendy Erber,  
Sarah Clarke, Helen Sewell  
AM and Spinnaker Director  
Jenny Rachmat.*



*Rotary Club representatives with Dr Duncan Purtil.*

Peter Bradley  
 Roger Clarnette  
 Sergio Starkstein  
 Timothy Davis  
 Wally Knezevic  
 Wendy Davis

**MHT FOUNDATION**

Aidan Parker  
 Alen Baltic  
 Alex Barile  
 Alison Seymour  
 Amy Barrett  
 Asel Jayatilake  
 Bank of Queensland Floreat  
 Bernard Gorman  
 Bradley Peters  
 Brayden Keizer  
 Brett White  
 Bryan Smith  
 Callia Brothers Pty Ltd  
 Captain John Smith  
 Carmen Todoru  
 Carol & Stephen Lesk  
 Cate Henderson  
 Cheyenne Payne-Poultney  
 Chloe Leray  
 Chris Davidson  
 Chris Lovelle  
 Churras Meat & Grocer  
 Claire Properjohn  
 Conor Wall  
 Dale Edgar  
 Dana Wallace-Campbell

Daniel Watson  
 Darren Wright  
 Dashiel Fewster  
 David Barton  
 David Granfield  
 David Kelly  
 David Stevens  
 Denis McInerney  
 Desmond D Sa  
 Dylan Jackson  
 Effy Xu  
 Ella Compton  
 Eloise Carroll  
 Emily Ballagher  
 Fraser Murray  
 Gabriel Bond  
 Geoff Booth  
 Geoff Davis  
 Go Camping &  
 Overlanding  
 Graham Mackay-Coghill  
 Grant Davey  
 Harry Fisher  
 Harry MCGoman  
 Hawke Rhebok  
 Henry Kelsey  
 Ika Ecclestone  
 Ivan Bird  
 Izabel Herceg  
 Jack Matsos  
 Jack Smith  
 James Depiazzi  
 James Keddell  
 Jason Ey  
 Jason Tran

Jennie Downie  
 Jeremy Rigg  
 Jess Mcquillan  
 Jodie Perram  
 John Forster  
 John Samson  
 Jonathan Persich  
 Jonathan Wall  
 Kaelin Abrahams  
 Karine Carroll  
 Kate Sheehan  
 Kenneth Craigie  
 Kevin Dwyer  
 Kimberly Minus  
 Kyle Anderson  
 Lauren Cromb  
 Leanne Baker  
 Leonard Ong  
 Libby Mussared  
 Luke Henry  
 Lynette Kong  
 Lynley Papineau  
 Ma Agnes Concepcion  
 Manuela Puerro  
 Margot Jones  
 Maria Grigorescu  
 Matthew Cigulev  
 Mel Katopodis  
 Melanie Wright  
 Melissa Callanan  
 Melvin Yeo  
 Michael Gillis  
 Michael Hanisch  
 Michael Maher  
 Myles Barlow

Nadine Georgiades  
 Nathan Beven  
 Paul Figliomeni  
 Pearl Chua-Kyselicova  
 Peter Dumas  
 Peter Elliott  
 Peter Liacopoulos  
 Petrina Johnson  
 Phil Wood  
 Philip Tran  
 Raam Janardhanam  
 Richard Lamont  
 Robert Bakwr  
 Robert Dinh  
 Rod MacKenzie  
 Rod O'Dea  
 Ross Norgett  
 Ryan Tunnicliffe  
 Sagar Shah  
 Samuel Freeman  
 Sandra Ruddle  
 Sarah Fordham  
 Scott Nesbit  
 Simon Millington  
 Stephen Bevis  
 Stephen Pratt  
 Steve Johnston  
 Steven Muller  
 Tanya Hundloe  
 Thomas Nutt  
 Trent Davey  
 Veronica Jeffery  
 Vicki Rasmussen  
 William Hall



**FIGHTING  
FOR BETTER  
HEALTH.  
FIGHTING  
FOR YOU.**

**FOR FURTHER INFORMATION:**

Dana Wallace-Campbell  
Executive Director  
Spinnaker Health Research Foundation

**E:** [admin@spinnakerhealth.org.au](mailto:admin@spinnakerhealth.org.au)  
**P:** 08 6152 5566

[www.spinnakerhealth.org.au](http://www.spinnakerhealth.org.au)